



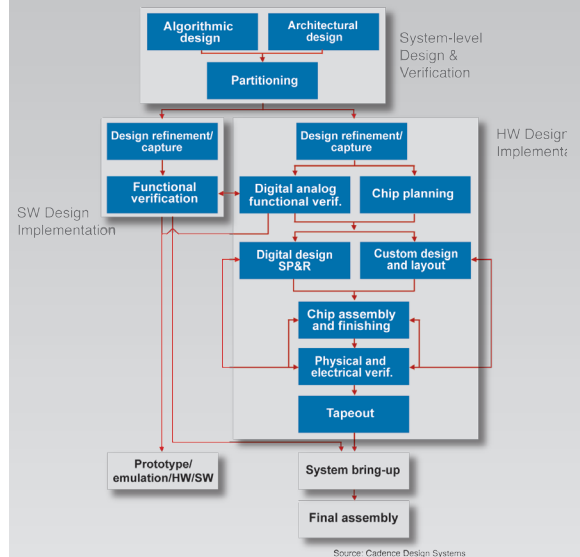
ENOVIA MatrixOne's DesignSync DFII

Your design team used to be in a single department — today it's often global. Yelling down the hallway once sufficed for collaboration, but now communication must cross borders, languages and time zones. At one time you could survive with little or no design management in the final stages of chip development — not any more.

As the complexity facing design teams has grown, so has their need for collaboration and management for the back-end of the design process. ENOVIA MatrixOne provides that solution with the DesignSync DFII, which adds Cadence data recognition and processing to the standard DesignSync Design Data Management (DDM) solution, and an integration into the Cadence graphical design environment.

DesignSync DFII is an integration into the Cadence Custom IC tool user interface and is aware of the unique file system behaviors of the Cadence software.

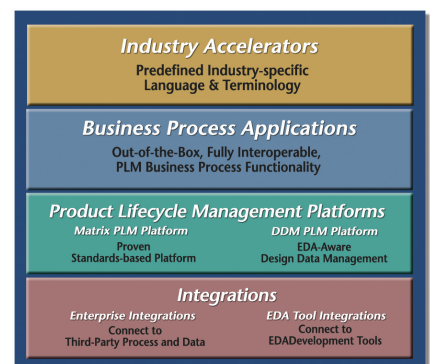
DesignSync can manage the immense amounts of information generated from large design teams with hundreds of users. It has special features, such as data caching and mirroring, to maintain performance across multiple sites, while ensuring security with LDAP access control and SSL encryption. Detailed information on the base platform is included in the DesignSync datasheet.



ENOVIA MatrixOne's DesignSync DFII supports the full Cadence design flow:

- Integrated into the user interface of key Cadence tools
- Aware of unique file behaviors
- Manages Cadence data and more importantly the hand-offs from concept to tape-out.

ENOVIA MatrixOne PLM Environment



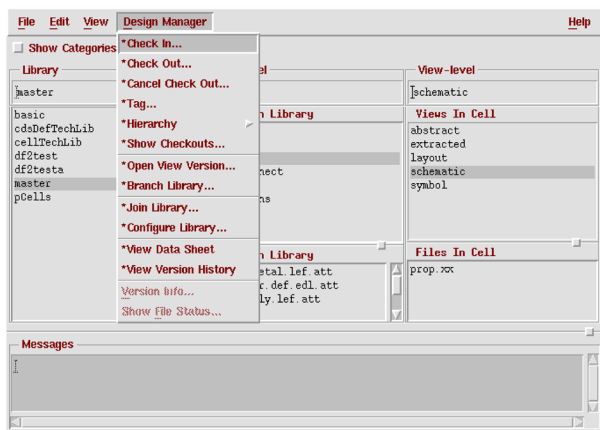
Feature Capabilities

A Strong Foundation

DesignSync DFII is based on the industry tested and broadly deployed Synchronicity DDM tool.

Integrated with the Cadence Custom IC Tools

DesignSync DFII is directly integrated with the Cadence custom IC toolset, providing the user with expanded functionality and the freedom to choose how they operate on their data and what they operate on. More specifically, DesignSync DFII is built into the graphical user interfaces such as the Command Interpreter Window (CIW), Graphic Editor Window and Library Manager tools like Virtuoso and Virtuoso XL.



Choose How You Work

Users can drive our design management tool through the Cadence user interface, the DesignSync GUI or the commandline. This flexibility supports many different use models.

Choose What You Operate On

Design management can be done at many levels: at the file, cell, library or even the block level. DDM operations can also be performed on categories and design hierarchies. In addition, objects can be selected using wildcard operations. These options greatly reduce the time involved in common operations such as checking in data or applying process tags.

Customizable to Your Needs

Several options are available for customizing DesignSync DFII, such as an overlay to manage design libraries. Advanced customizations to support your unique process flow or team setup can be done through the SKILL programming language interface.

Supported Platforms

DesignSync DFII is available on all major OS platforms for the Cadence custom IC software and is compatible with their versions 5.1.41 and above.

About ENOVIA MatrixOne

MatrixOne, Inc. was acquired by Paris-based Dassault Systèmes in May, 2006 and today is part of its ENOVIA PLM Collaborative Environment family of solutions. The ENOVIA MatrixOne solutions enable companies to accelerate product innovation to achieve top line revenue growth and improve bottom line profitability. ENOVIA MatrixOne is focused on helping companies across the automotive, aerospace & defense, consumer, machinery, medical device, semiconductor and high-tech industries solve their most challenging new product development and introduction problems. More than 850 companies use ENOVIA MatrixOne solutions to drive business value and gain a competitive advantage, including industry leaders such as BAE Systems, Bosch, Comau, General Electric, Honda, Johnson Controls, Linde AG, NCR, New Balance, Nokia, Philips, Porsche, Procter & Gamble, REI, Sony Ericsson, STMicroelectronics and Toshiba. ENOVIA MatrixOne (www.MatrixOne.com) is headquartered in Westford, Massachusetts, with locations throughout North America, Europe and Asia-Pacific.



210 Littleton Road, Westford, Massachusetts 01886 978 589 4000 MatrixOne.com 3DS.com

© 2006, 2007, Dassault Systèmes. All rights reserved.
ENOVIA MatrixOne and the ENOVIA and MatrixOne logos, MatrixOne's Synchronicity DesignSync and MatrixOne's Synchronicity ProjectSync are registered trademarks, and Matrix PLM Platform, MatrixOne's Synchronicity Developer Suite, MatrixOne's Hierarchical Configuration Manager, MatrixOne's Synchronicity DesignSync DFII, MatrixOne's Synchronicity DesignSync MW and MatrixOne's Synchronicity DesignSync CTS are trademarks of Dassault Systèmes. All other trademarks and service marks are the property of their respective owners.