



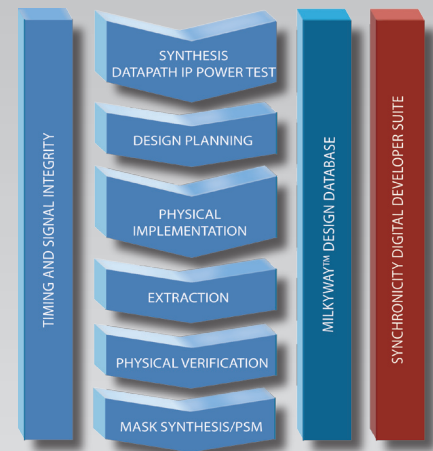
ENOVIA MatrixOne's DesignSync MW

Not too long ago, a significant digital design could be created by a relatively small team. Now however, teams are larger and often distributed across multiple sites, time zones and companies. To add to these complexities, as the industry moves to nanometer features and gigahertz clocks, physical design iterations need to be executed more often and earlier in the design flow. The ad-hoc, shareware tools that used to suffice for small teams dealing with only a few limited text files can no longer manage all the data and interactions of a larger full flow team.

As the complexity has grown, so has the need for collaboration and management across the entire development process. Moreover, complex data, like that of Synopsys Milkyway, does directly map from design units to files, which greatly adds to the challenge of version control and design data management. ENOVIA MatrixOne provides a solution with DesignSync MW, which supports the Synopsys Galaxy design flow by adding both Milkyway database recognition and processing capability, as well as an integration into the Synopsys Galaxy tool set.

With DesignSync MW, users can directly manage and collaborate with Milkyway data used by such Synopsys tools as Astro™ and JupiterXT™. DesignSync MW understands the specific data structure of the Synopsys design tools and the behaviors required to reliably and efficiently manage them in a team environment. It enables the team to collaborate at the design unit level, rather than exchanging copies of the whole library, as is common without this formal interface.

DesignSync MW can manage the immense amount of information generated from large design teams with hundreds of users. It has special features, such as data caches and mirrors to maintain performance across multiple sites, while ensuring enterprise security with fine grain access controls, SSL encryption and LDAP authentication. Detailed information on the base platform is included in the DesignSync datasheet.



ENOVIA MatrixOne's DesignSync Milkyway raises engineering productivity by providing secure, multi-site design collaboration and management across the full Synopsys Galaxy design platform.

ENOVIA MatrixOne PLM Environment



Features & Capabilities

Span Synopsys Galaxy Implementation Platform

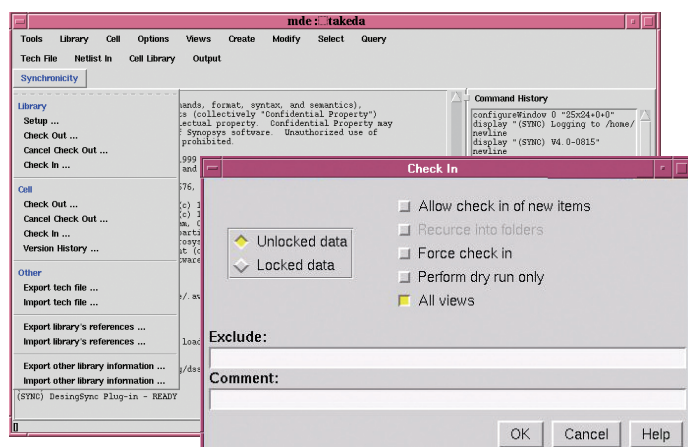
With the Milkyway database under design management in DesignSync MW, you are able to leverage the efforts of multiples designers contributing to one Milkyway database. Only DesignSync MW provides the capability for sharing design units with a Milkyway database among multiple designers performing tasks in individual workspaces.

Efficient Disk Space Usage

Because DesignSync MW provides the capability to collaborate with a Milkyway database, it is not necessary to make copies of databases for any user who wishes to contribute changes.

Manage Contributions from Many Parties

Because a Milkyway database is binary, it's not possible to combine (merge) the contributions of multiple designers made in different copies the database. DesignSync MW eliminates this problem by allowing a single database to be shared.



DesignSync MW has been integrated into the user interfaces of key Synopsys Galaxy tools like Astro.

Safety Net for Milkyway Design Data

Every engineer has stories of bad files overwriting good, and of the taped-out configuration being lost during the test run. DesignSync MW allows users to take snapshots of known good configurations to safeguard against such occurrences.

A Strong Foundation

DesignSync MW is an extension of the industry-tested and broadly deployed DesignSync, with over 25,000 copies in use at over 120 of the world's top semiconductor design companies.

Choose How You Work

Users can drive their data through the Synopsys user interface, the DesignSync GUI, or the command line. This flexibility supports many different use models.

Supported Platforms

DesignSync MW is available on popular versions of Solaris, HP-UX and Linux, and is widely compatible with Synopsys tools that use recent versions of the Milkyway Database.

About ENOVIA MatrixOne

MatrixOne, Inc. was acquired by Paris-based Dassault Systèmes in May, 2006 and today is part of its ENOVIA PLM Collaborative Environment family of solutions. The ENOVIA MatrixOne solutions enable companies to accelerate product innovation to achieve top line revenue growth and improve bottom line profitability. ENOVIA MatrixOne is focused on helping companies across the automotive, aerospace & defense, consumer, machinery, medical device, semiconductor and high-tech industries solve their most challenging new product development and introduction problems. More than 850 companies use ENOVIA MatrixOne solutions to drive business value and gain a competitive advantage, including industry leaders such as BAE Systems, Bosch, Comau, General Electric, Honda, Johnson Controls, Linde AG, NCR, New Balance, Nokia, Philips, Porsche, Procter & Gamble, REI, Sony Ericsson, STMicroelectronics and Toshiba. ENOVIA MatrixOne (www.MatrixOne.com) is headquartered in Westford, Massachusetts, with locations throughout North America, Europe and Asia-Pacific.



210 Littleton Road, Westford, Massachusetts 01886 978 589 4000 MatrixOne.com 3DS.com

© 2006, 2007, Dassault Systèmes. All rights reserved.
ENOVIA MatrixOne and the ENOVIA and MatrixOne logos, MatrixOne's Synchronicity DesignSync and MatrixOne's Synchronicity ProjectSync are registered trademarks, and Matrix PLM Platform, MatrixOne's Synchronicity Developer Suite, MatrixOne's Hierarchical Configuration Manager, MatrixOne's Synchronicity DesignSync DFI, MatrixOne's Synchronicity DesignSync MW and MatrixOne's Synchronicity DesignSync CTS are trademarks of Dassault Systèmes. All other trademarks and service marks are the property of their respective owners.