

MatrixOne Program Central™

MatrixOne Program Central™ enables companies to create a competitive advantage by delivering products from concept to market faster. Organizations can concentrate critical resources on the most profitable products while standardizing on best in class business processes across the extended enterprise. Through project pipeline dashboards, this solution provides management with real-time visibility into a project's status in terms of resources, costs and benefits. Ultimately, this allows for better decision making when analyzing which projects offer the highest potential return on investment.

MatrixOne Program Central's flexibility and templates make it possible for a company to easily institutionalize its best practices for various project types. This collaborative project management solution dramatically increases the productivity of globally distributed users by executing projects and programs with real-time information that is updated automatically through direct links to tasks, documents, deliverables and other data sources. These automatic updates allow users to focus on product development rather than project management.

With MatrixOne Program Central, companies can provide global teams with the accurate, real-time information they need to keep projects on track and respond to ever-shrinking product lifecycles.

Business Process Application

Successfully Manage Collaborative Projects to Increase Productivity, Cut Costs and Reduce Cycle Times

MatrixOne Program Central enables companies to optimize global resource staffing plans for strategic projects and help reduce cycle times by implementing best-in-class business processes. Project teams can easily create, share and manage project information globally, ensuring consistent approaches and informed collaborative decisions.

With MatrixOne Program Central, you can:

- Provide real-time access to project pipelines for rapid analysis and decision making
- Optimize staffing plans with real-time utilization reports to assess availability of key skills across all projects
- Drive a phased-base decision making process using best-in-class templates with predefined phases, gates and milestones
- Facilitate access to processes and data within a secure environment
- Improve execution of complex programs with visibility to sub-project inter-dependencies
- Coordinate and collaborate on the planning and execution of projects in real-time
- Manage complex collaborative projects involving internal and external teams of prospects, customers, suppliers and partners

ENOVIA MatrixOne PLM Environment



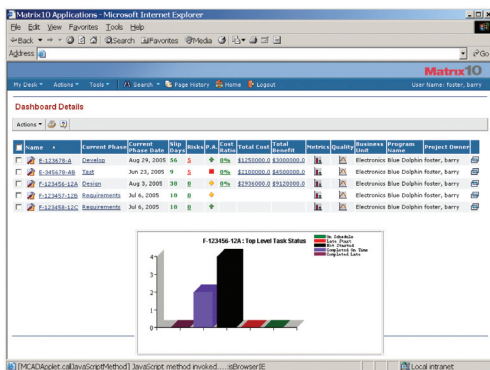
Features and Capabilities

Business Goals Managers can define a business goal hierarchy to help identify which projects should be approved and funded based on how they impact strategy.

Resource Management Organizations can define enterprise wide business skill hierarchies to perform project planning based on resource competency and experience along with resource utilization report to optimize productivity and improve resource allocation decisions.

Project Dashboards Management can leverage dashboards to get an aggregated high-level view of project status by phase, risk, quality, issues, assessments, costs, benefits with graphical views of key processes.

Project Templates Develop process standards and enhance predictability by driving repetitive project execution throughout the organization. Project template consists of work breakdown and folder structures, questionnaires, document templates and bookmarks. During execution, team members are provided with automatic reminders of upcoming or late tasks.



Inter-dependent Projects Program Managers can manage complex programs with direct access and visibility to real-time status of sub-project inter-dependencies.

Work Breakdown Structure Project leaders can define schedules to organize global project teams into phase-gate activities that take into consideration project member's non-working days. Program Central supports all phases of development, including the ideation phase in which organizations evaluate the likely value and feasibility of all potential new projects. Once each concept is approved, it is updated to a formal project and can be planned in detail.

The Matrix PLM Environment

Being the industry's most robust and flexible PLM environment, Matrix PLM provides organizations with a single, secure environment that eliminates the barriers caused by geographically dispersed organizations and value chains, multiple disparate systems and increasing security requirements. The Environment consists of a portfolio of business process applications that work in conjunction with the Matrix PLM Platform and our broad offering of enterprise integrations.

About ENOVIA MatrixOne

MatrixOne, Inc. was acquired by Paris-based Dassault Systèmes in May, 2006 and today is part of its ENOVIA PLM Collaborative Environment family of solutions. The ENOVIA MatrixOne solutions enable companies to accelerate product innovation to achieve top line revenue growth and improve bottom line profitability. ENOVIA MatrixOne is focused on helping companies across the automotive, aerospace & defense, consumer, machinery, medical device, semiconductor and high-tech industries solve their most challenging new product development and introduction problems. More than 850 companies use ENOVIA MatrixOne solutions to drive business value and gain a competitive advantage, including industry leaders such as BAE Systems, Bosch, Comau, General Electric, Honda, Johnson Controls, Linde AG, NCR, New Balance, Nokia, Philips, Porsche, Procter & Gamble, REI, Sony Ericsson, STMicroelectronics and Toshiba. ENOVIA MatrixOne (www.MatrixOne.com) is headquartered in Westford, Massachusetts, with locations throughout North America, Europe and Asia-Pacific.

Microsoft Project Integration Project leaders can use a bi-directional Microsoft Project integration as a user interface front-end to create and maintain schedules and then re-import schedule and resource data back into MatrixOne Program Central for execution.

Task Deliverables The system will automatically update a task's assignment status as complete by associating a deliverable.

Project Content All project content and deliverables are securely managed and stored within folder and subfolder structures. Security is established on a per project basis with a project owner and project leads determine individual access rights. Within a project, each folder and file maintains additional levels of security. Team members can establish a single environment where all project information—not just documents—can be managed and shared. Members can subscribe to document events to become immediately informed as changes and additions occur.

Project Content Reports Project managers can improve visibility of all project-related content by generating a report with a complete summary of project deliverables from either the work breakdown structure or from the folder structure.

Project Financials Project leaders can capture and manage actual and estimated project costs and benefits.

Threaded Discussions Project teams can conduct online discussions regarding a project or task. All team members can view and comment on the original topic or any of the subsequent responses.

Routing Project members can create ad-hoc routes or workflows to circulate tasks, projects and files for further work and/or approvals.

Issue Management During project execution, teams can capture, assign, track and resolve problems as they occur.

Risk Management Project teams through basic techniques can capture, analyze and mitigate project risks. Risks are prioritized to identify which should be mitigated due to their potential impact, which should be given normal attention and which are minor and do not require significant attention.

Critical To Quality (CTQ) To ensure that projects meet customer requirements, project teams can define and measure a project's CTQs. These are the key measurable characteristics of a product or process in which performance standards or specification limits must be met in order to satisfy the customer needs.

